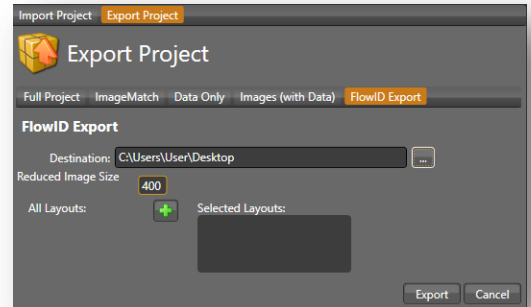


Creating Flow® ID Installs

Creating Your Export

1. Open your completed job inside of your version of Flow®. You will want to be sure your images and data are correctly matched with your images already cropped
*** It is recommended that if this is a Green Screen job that ImageMatch export with the default background applied rather than a Flow® ID export. Please contact PhotoLynx if you need assistance importing matched images and data into Flow® ID***
2. Go to your *Export* screen
3. Select *FlowID Export*
4. Press the [...] button to browse out for a location to save your export
Note: We recommend saving to your desktop, rather than directly to a jump drive or server
5. Select your *Reduced Image Size*
6. To include any layouts you have created for this school with the export, press the green plus sign next to *Selected Layouts*. From the drop down list of layouts provided, press the green plus sign next to all the layouts you wish to include with your export
7. Press *Export* to begin the export process – you will receive a PAF file named after your Flow® job
8. Move your exported PAF file to a jump drive, CD, dropbox, etc. to bring to the school



Installing Flow® ID at the School

1. Go to <http://www.flow.photolynx.com>
2. Select the correct download for the computer you are using, either 64-bit or 32-bit
3. Right click on the Flow® installer and choose *Run as Administrator*
Note: Full admin rights are required for Flow® ID to fully operate
4. Once installed, right click on the Flow® icon on the desktop and go to *Properties*. Under the *Compatibility* tab, check *Run this program as an administrator* and click *OK*
5. Double click on the icon to launch Flow® and enter your activation key provided by the PhotoLynx® support team
6. You will receive a notification that Flow® will activate over the internet. Press *OK*
7. You will receive a notification letting you know your activation was successful and when your software will expire. Press *OK*

Importing School Information

1. Copy the exported PAF file to your desktop
2. Once activated, go to *Import/Export Project*
3. Be sure *Import Project Archive File* is selected
4. Press the *Select* button to browse out to your PAF file on your desktop, and press *Open*
5. Check *Open Project after Import* and press the *Import* button
6. Your images, data, layouts and graphics will now be imported into your Flow® ID activation

